

# Nordic SAP Treasury Community Event 2023

Welcome - and an introduction to creating a successful project - presented by <b>PwC</b>	13:00
Discovering SAPs latest Treasury capabilities - presented by <b>SAP</b>	13:15
Discussion on SAP Treasury developments and community	13:30
SAP Payment Factory - Presented by Carolin Issa, Transaction Banking, <b>Otto Group</b>	13:45
<b>Break and networking</b>	14:15
SAP Commodity Risk Management – presented by <b>SAP and PwC</b>	15:00
ABB's Transformation in Corporate Treasury - presented by Felix Meyer, Head of Treasury Technology, <b>ABB</b>	15:30
<b>Break and networking</b>	16:00
Optimised risk management - presented by Jean-Baptiste Disdet, Treasury Technology Director, <b>JTI</b>	16:30
<b>Wrap up</b>	17:00
<b>Drinks and light dinner</b>	17:15
<b>Thank you for today</b>	19:00

## Your hosts of today



Casper Borly  
Financial Risk & Treasury



Melania-Margareta Meyer  
Treasury & Risk  
Management



# SAP Treasury introduction

Melania Maior, SAP  
November, 2023

SAP, PWC and Customers Only



# Disclaimer

The information in this presentation is confidential and proprietary to SAP and may not be disclosed without the permission of SAP. Except for your obligation to protect confidential information, this presentation is not subject to your license agreement or any other service or subscription agreement with SAP. SAP has no obligation to pursue any course of business outlined in this presentation or any related document, or to develop or release any functionality mentioned therein.

This presentation, or any related document and SAP's strategy and possible future developments, products and or platforms directions and functionality are all subject to change and may be changed by SAP at any time for any reason without notice. The information in this presentation is not a commitment, promise or legal obligation to deliver any material, code or functionality. This presentation is provided without a warranty of any kind, either express or implied, including but not limited to, the implied warranties of merchantability, fitness for a particular purpose, or non-infringement. This presentation is for informational purposes and may not be incorporated into a contract. SAP assumes no responsibility for errors or omissions in this presentation, except if such damages were caused by SAP's intentional or gross negligence.

All forward-looking statements are subject to various risks and uncertainties that could cause actual results to differ materially from expectations. Readers are cautioned not to place undue reliance on these forward-looking statements, which speak only as of their dates, and they should not be relied upon in making purchasing decisions.



# **SAP** Contents

**01** Context

---

**02** Solution Overview

---

**03** Your Journey with SAP Treasury

---

**04** Roadmap



# 01

## Context

- 01 **Context**
- 02 Solution Overview
- 03 Your Journey with SAP Treasury
- 04 Roadmap



# Today's Hedge Management Challenges in a decentralized environment

Disparate, slow, opaque and costly



How can I lead non-disruptive treasury activities and acting like a lighthouse for the business?

Can I have centralized end to end hedge and payment management processes?

How about risk calculations and predictive analytics?



Treasury Manager



Cash Management Manager

01 Context

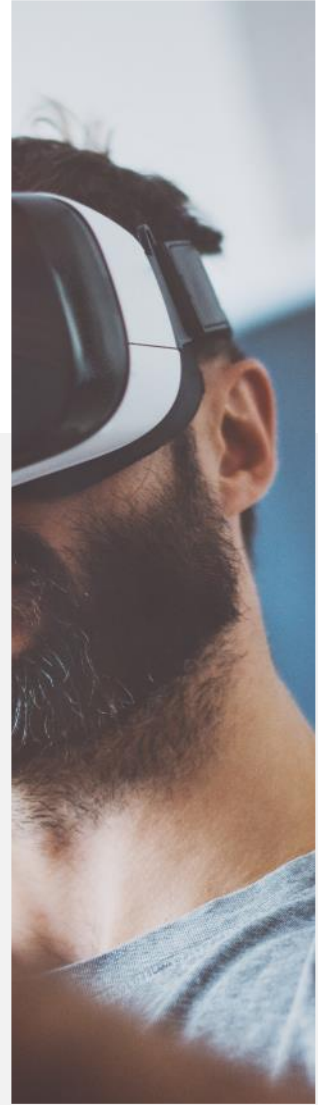
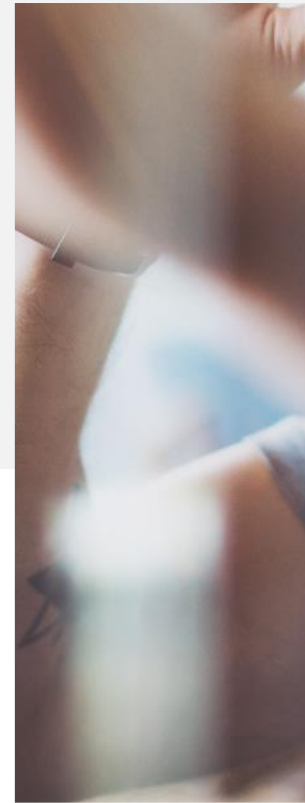
02 **Solution Overview**

03 Your Journey with SAP Treasury

04 Roadmap

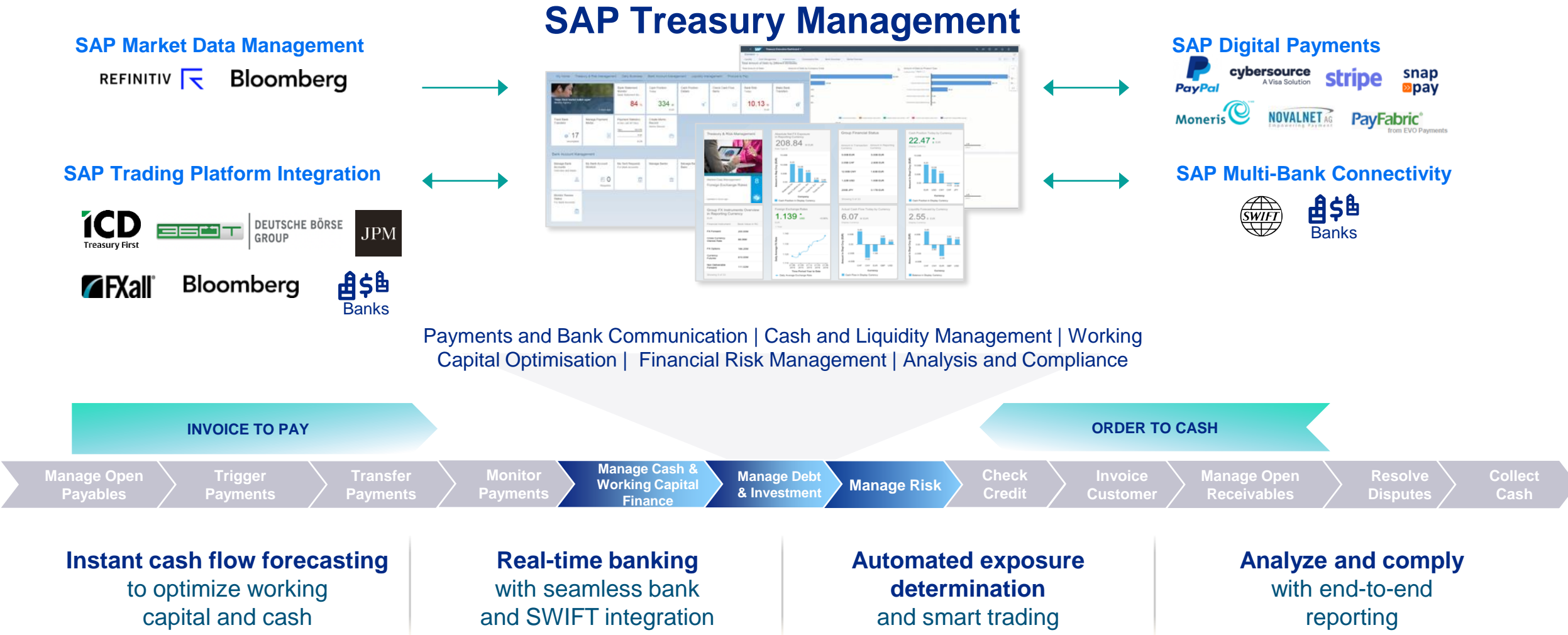
# 02

## Solution Overview



# SAP Treasury and Working Capital Management

Embedded by nature, insightful by design





# One Exposure concept

## For funding, cash and Liquidity Management

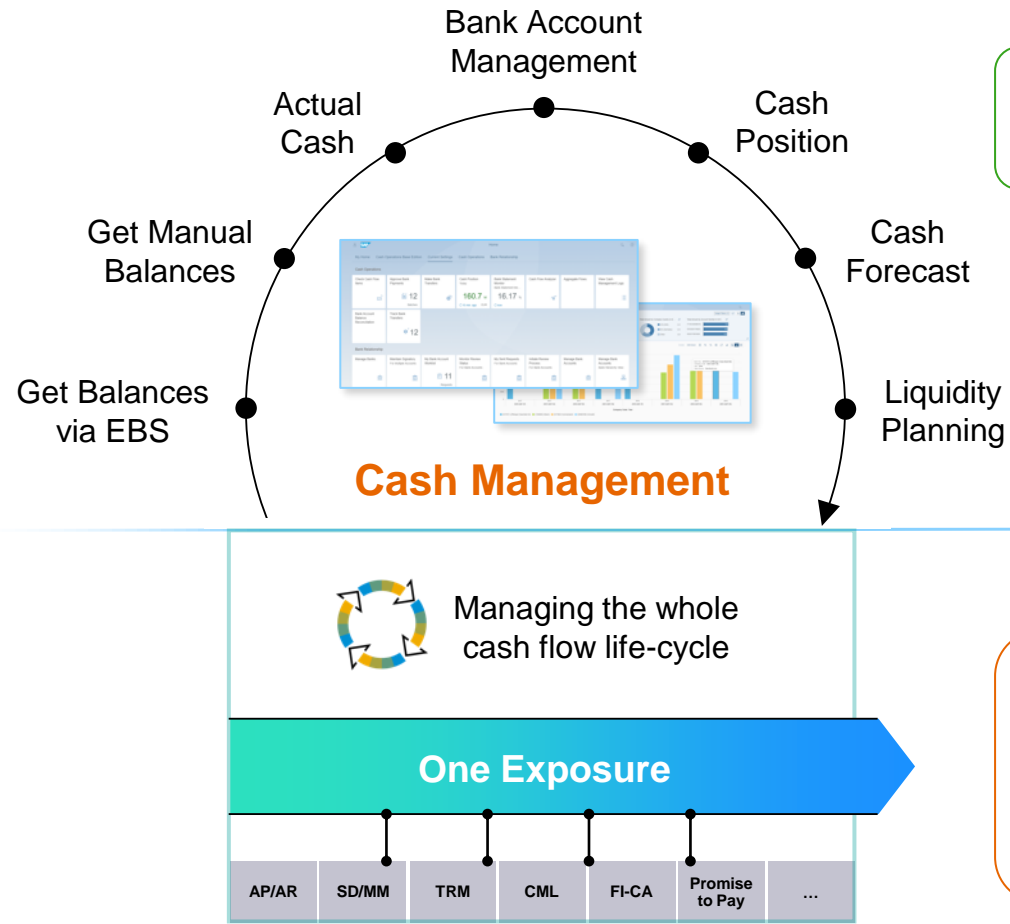
### Insights:

Exposure Data regardless of the type of exposure are centrally available on the basis of a standardized data model. Data embedded in SAP is automatically called in SAP One Exposure and is represented in cash management.

Cash management and analyses - centralized or decentralized - are based on harmonized and consistent data.

### Benefits:

- Harmonized data structures enable highly automated and fast exposure call up
- Embedded SAP-based data throughout the business
- High transparency
- Less manual data aggregation
- Enable cross team collaboration
- Centralized funding requests



# SAP Multi-Bank Connectivity

## Different options to connect corporate customers and banks:

### SWIFT

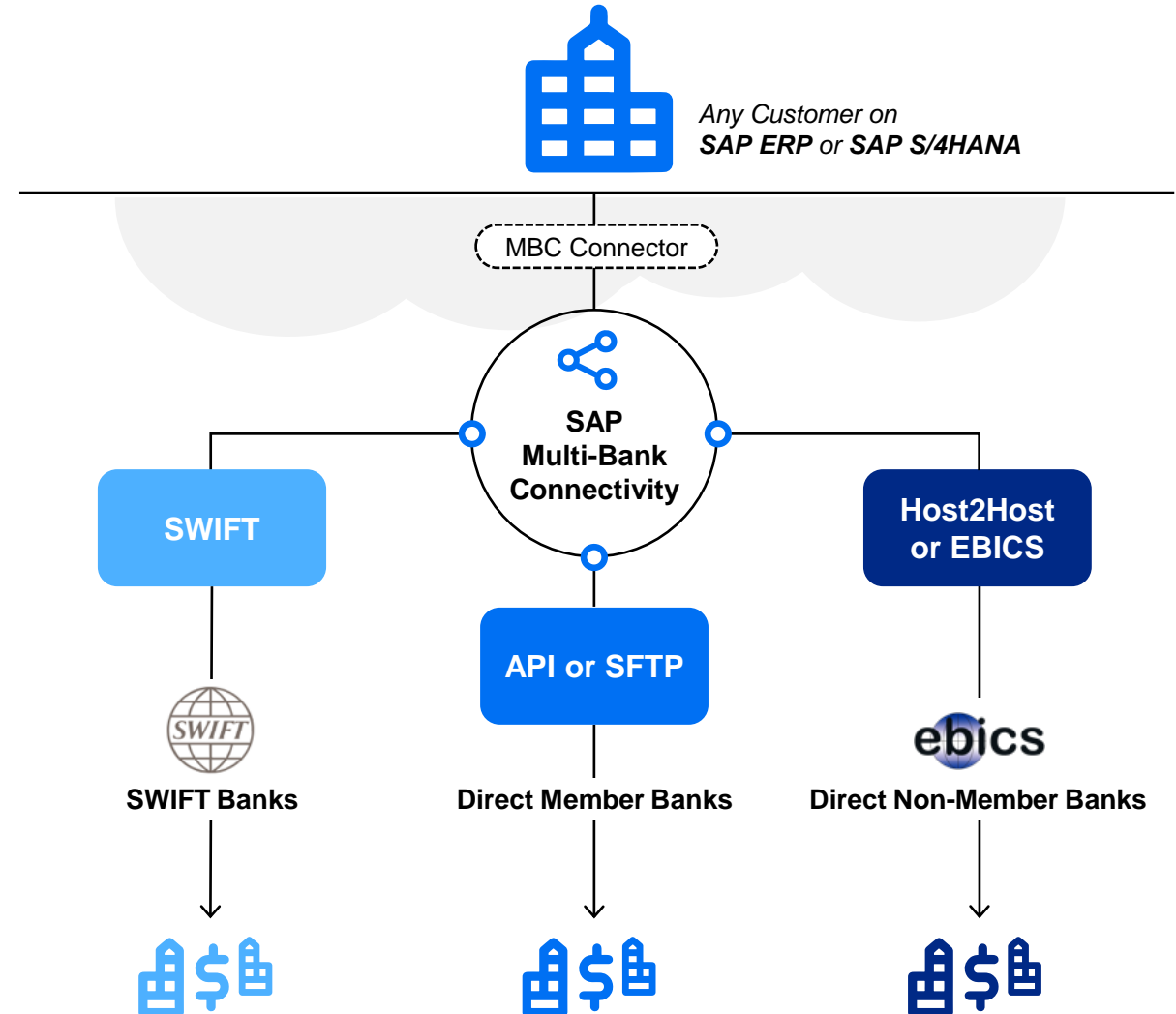
The solution is **fully SWIFT certified** as SWIFT L2BA provider and offers the possibility to connect to the extensive list of SWIFT banks throughout the world.

### API or SFTP

**Direct Member Banks** are connected via a standardized connection using bank APIs or protocols like SFTP.

### Host2Host or EBICS

In an instance where a corporate customer requires to have a direct connection to a bank that does not have a contractual agreement with MBC, SAP establishes a **direct connection** between corporate customer and the non-member bank.



# SAP Advanced Payment Management

## Solution Capabilities

SAP S/4HANA Cloud for advanced payment management allows you to centralize all payment activities of a corporate group:



**Complete cash management solution** with advanced payment management capabilities.



**Fully functional Advanced Payment Factory** in the cloud.



**Payment verification** against sanctioned party list.



**Automatic notifications** for events during payment lifecycle.



**Format mapping tools** for ISO conversion.



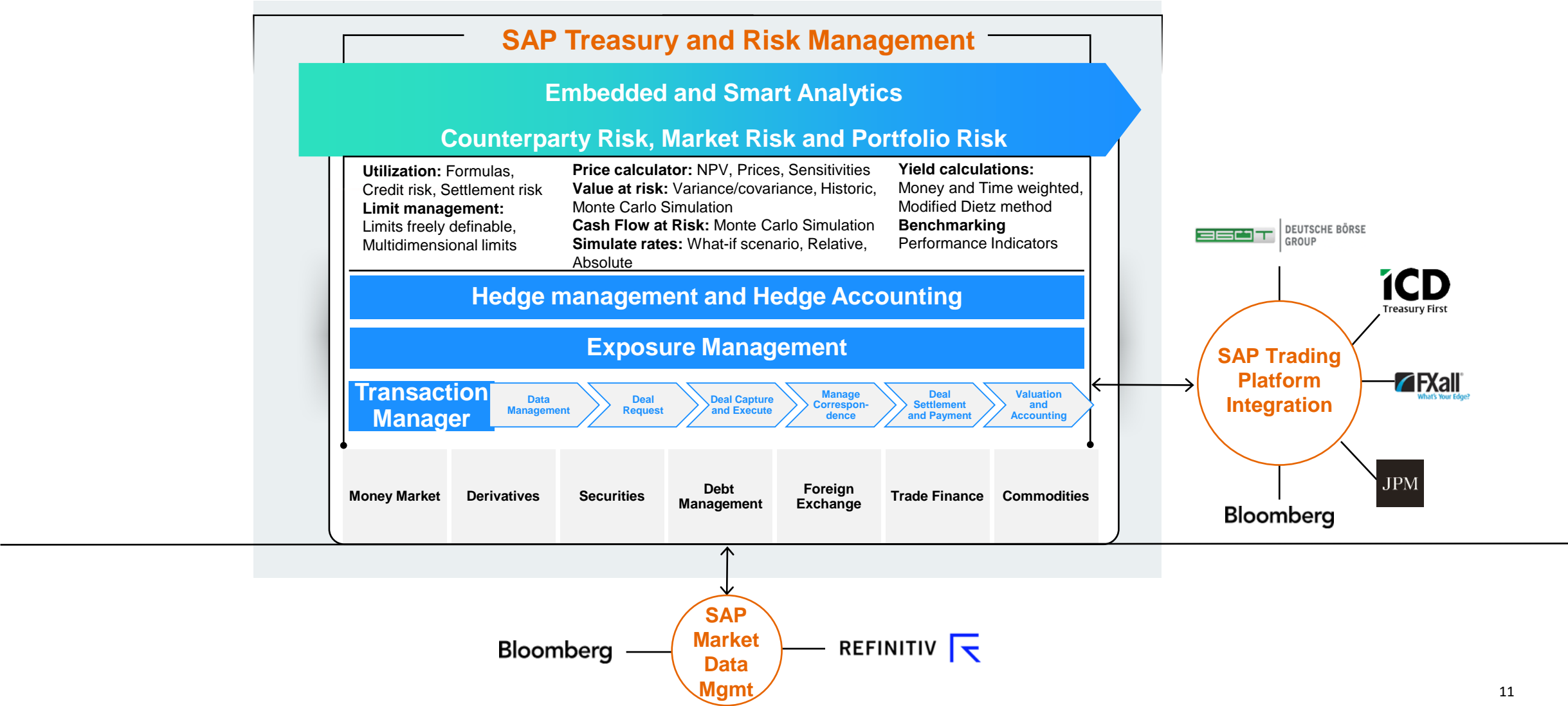
Enablement of various card payment options through **SAP digital payments add-on**.



**Automated corporate-to-bank connectivity** in the cloud.

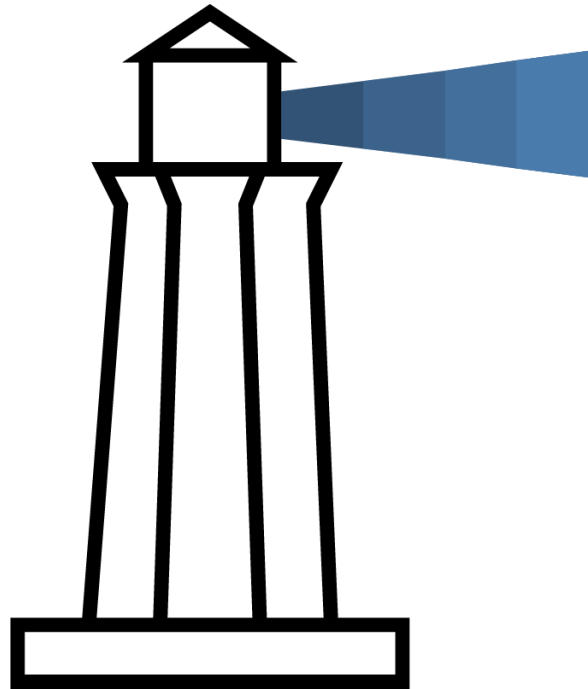


# Comprehensive Solution for Debt, Investment, and Risk Management





# SAP Treasury as a lighthouse for Financial Risk Management



## 1. Hedge & Exposure management and Deal end-to-end lifecycle

- You have to deal with identification, quantification and management of financial (FX, IR, prices, commodity prices etc) and end-to-end deal lifecycle.
- Dashboards and reports available provide the overview of the relevant exposures and the impact of hedges with drilldown capabilities and notifications.

## 2. Financial Risk Management

- Your organization faces increasing financial risks originating from, **interest rate** fluctuations, **foreign exchange volatility**, **securities** and **commodity price** variations.
- Because of correlation effects your team need to have a holistic overview of the calculated risk figures, simulated deals and immediate overall impact on the managed portfolio.

## 3. Funding, monitor the forecast and precise Liquidity across enterprise

- Your organization growing complexity leads to an increasingly difficulty to gain an accurate real-time view of the company's cash full visibility, transparency and overall working capital.
- You need a single version of the truth, with a consolidated view of cash events from the entire working capital of the business with predictive liquidity analytics to support treasury as a lighthouse function.

Data Management

Select Exposures

Measure  
Exposures

Hedge &  
Liquidity  
Management

Send  
Trade/Hedge  
Requests

Limit  
Management

Deal Execution  
and Capture

Correspondence  
Management

Settlement  
and Payment

Evaluate  
Deal

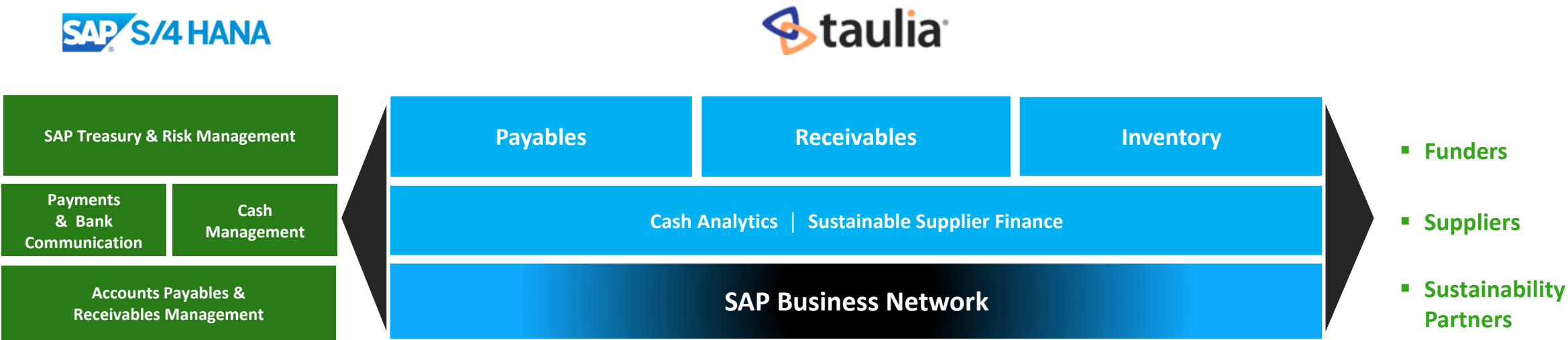
Market & Pf. Risk  
Calculations

Analytics &  
Reporting

# SAP Working Capital Management

## Solution suite spanning multiple stakeholders

*“With SAP Taulia, companies can execute working capital management programs to accelerate cash flow. The SAP Taulia platform is focused on enabling buyers and suppliers to choose when to pay and get paid, freeing up cash for every business to thrive”*



*“SAP Finance and Treasury provides comprehensive insights based on ERP data, allowing companies to analyze cash flows in real-time and plan working capital needs in order to create holistic working capital programs”*

*“SAP Business Network connects people, processes, and devices across multiple enterprises, digitizes transactions and creates transparent, resilient, and sustainable supply chains”*

# Taulia Working Capital Management

## The Solutions



### Dynamic Discounting

Offer suppliers early payment and earn a risk-free return for your business



### Supply Chain Finance

Offer your suppliers vital cash flow freedom using third-party funded Reverse Factoring..



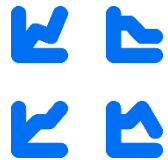
### Inventory Finance

This provides supply chain assurance, mitigating against long lead times, stock outages, and lost sales.



### Receivables Finance

Receive early payment on invoices due from customers. Optimise working capital, reduce DSO



### Analytics & AI

An intelligent analytics suite that guides you in how to improve working capital performance



### Multi-funder Platform

Access funding from your relationship banks and from our global network to get the cash you need



### End2End

SAP Treasury solutions enable detailed planning, Taulia WCM enables program setup and execution, while SAP Business Network enables collaboration with funders and supplier



### ESG

Reward suppliers for meeting specific ESG targets through the terms of the financing agreement, incentivizing ethical practices

- 01 Context
- 02 Solution Overview
- 03 **Your Journey with SAP Treasury**
- 04 Roadmap

# 03

## Your journey with SAP Treasury



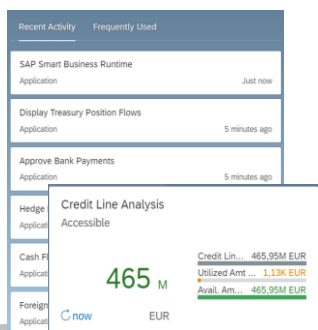


# Your journey with SAP Treasury...

...provide one fluid, intuitive experience which makes Treasury coherent and delightful!

## Start with your core

Adopt best practices for Treasury



## Engage and automate

Achieve more with bottom up communication, innovation and automation

02.02.2022	4.436.154,25 CHF
-1.000,00 ALL	
-1.002.372.602,47 AUD	
-1.057.299,68 BRL	
9.953.069.137,99 CAD	
4.436.154,25 CHF	
-11.528.331.023,45 CNY	
0 COP	
100,00 CYP	
-2.000,00 CZK	
59.991.627.505.009,28...	
63.178.275,10 GBP	
-1.176.525.276,01 HKD	

Bank Account: undefined  
Company Code:

[Bank Transfer From](#)  
Bank Transfer To  
Check Cash Flow Items  
Create Cash Request as Receiving Bank  
Create Cash Request as Sending Bank Account

More Links

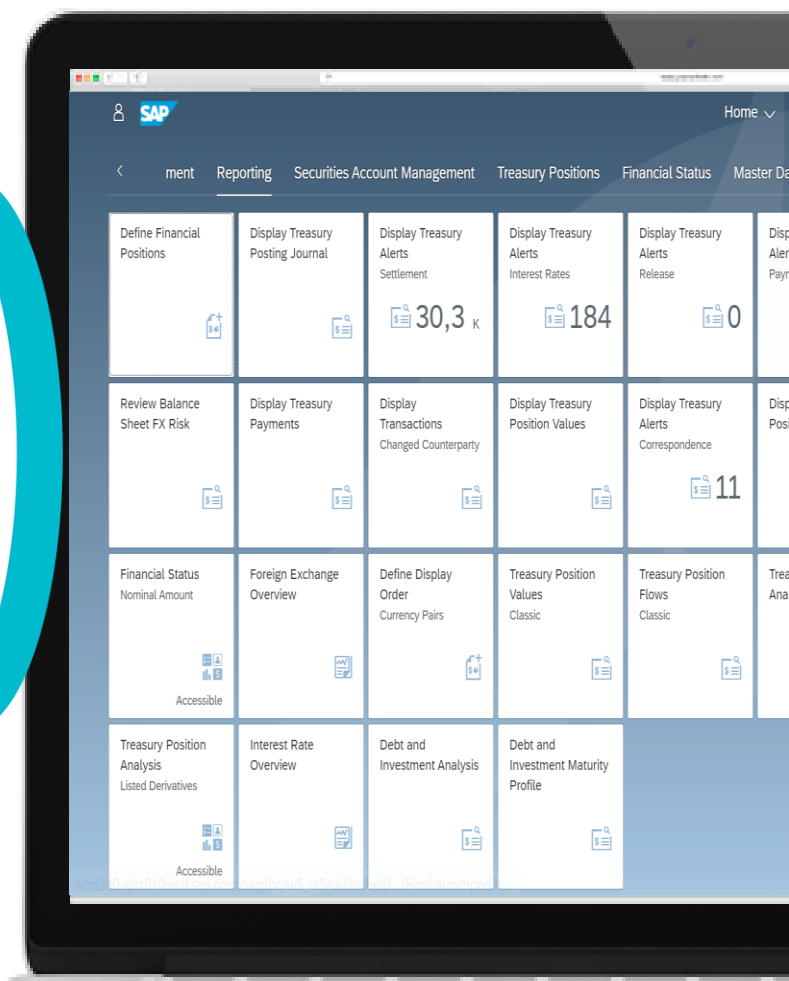
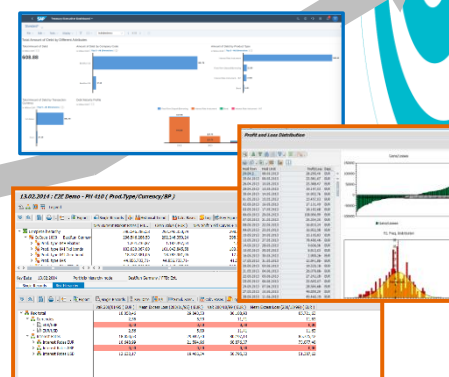
## Digitize

Digitize processes and benefit from seamless integrations to gain visibility and agility



## Automate and optimize

Leverage analytics, risk analyzers, workflows, machine learning, realtime data and more...



# 04

## Roadmap

- 01 Context
- 02 Solution Overview
- 03 Your Journey with SAP Treasury
- 04 **Roadmap**



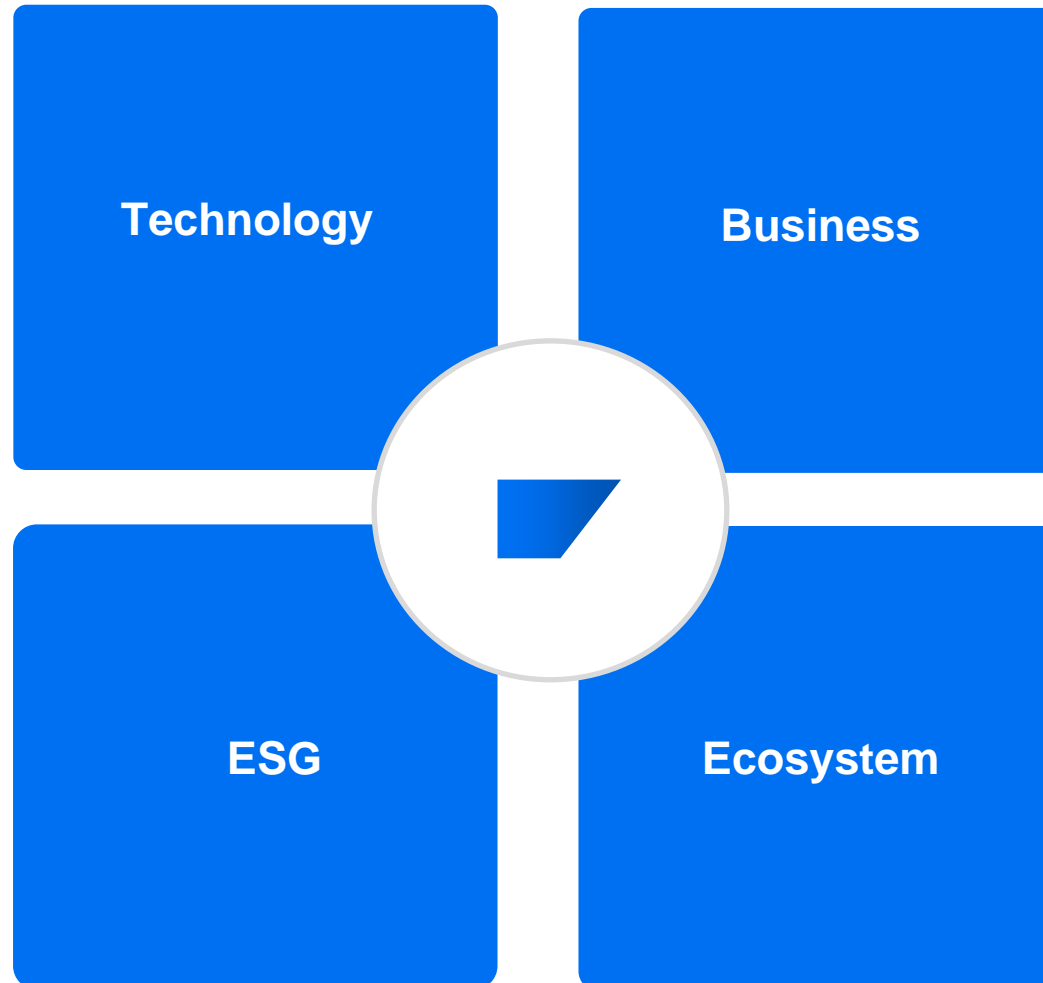
# SAP Treasury & Working Capital Roadmap\*

Continuous Innovations from SAP Labs

SAP Labs  
Preview

- Modularization and faster deployments using SAP's Cloud Platform
- Predictive Liquidity Forecast using Machine Learning
- Next Gen Enterprise Service Management
- Crypto Payments

- Sustainable Finance
- Green Ledger
- Carbon Emission Management
- Green and other sustainable instruments



- New In-House Bank complementing the modern Payment Factory
- In House Bank supporting eBAM
- Real-Time Payments
- Working Capital Management

- API's to support collaboration within the Treasury ecosystem
- Bank Master Data as a service
- Strategic Partner Alliances supporting new business models

\* SAP reserves the right to make any changes to this roadmap at any time.

# SAP Treasury direction - deep dive selection for this event

SAP Labs  
Preview



## Product Aspiration

Roadmap SAP Treasury (not a full list\*):

- Further usage of banking API for example beyond bank balances
- Multi-Bank Connectivity member key banks expansion
- Expanding functional scope of in-house banking
- Harmonization with surrounding components including payment formats, masking etc.
- Bank Statement handling beyond pure message routing
- Decoupling payment execution from accounting on a central platform
- Payments & In-house banking dashboard
- eBAM support for account opening process in inhouse bank
- Bloomberg FXGO addition to SAP Trading Platform Integration (TPI)
- Following up for new EMIR Reporting requirements for both FX and Commodity Trades
- Continuous enhancing reporting capabilities as per latest reporting capabilities and innovations

SAP Treasury Roadmap\*

\*SAP reserves the right to make any changes to this [roadmap](#) at any time.



# Thank you.

Contact information:

**Melania Maior**

Head of Treasury Customer Solution Advisory EMEA

The Circle 66, 8058 Zürich, SAP Switzerland

+41 79 897 08 57

[Melania.maior@sap.com](mailto:Melania.maior@sap.com)